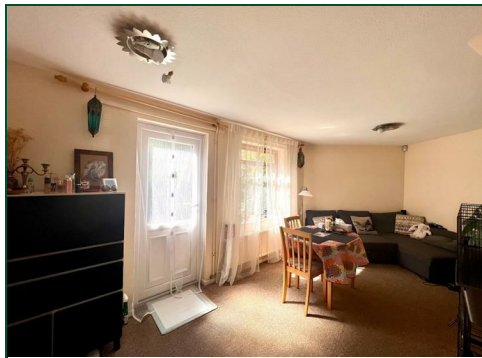




Flintcomb Rise

Woodfields, Northampton

oriordanbond
LETTINGS



Flintcomb Rise

Woodfields

NN3 8QU

£900 PCM

A well presented terraced property with accommodation comprising entrance hall, lounge with door leading to the rear garden and opening to dining area and fitted kitchen. To the first floor are two good size bedrooms and a fitted shower room. Externally to the rear is a fully enclosed garden and to the front is a driveway providing off road parking for one car. Further benefits include gas radiator heating and double glazing.

Tenancy Information

- Deposit: £1,038.00 (1 Week Holding Deposit - £207.00)
- Smokers: Not Allowed
- Pets: Considered
- Unfurnished
- Length of Tenancy: 12 Months
- Available: Early - Mid January 2026

Additional information

- Council Tax Band: A
- Energy Efficiency Rating: C

Viewing

Viewing strictly by appointment – details below

Disclaimer

O'Riordan Bond Estate Agents Limited has not tested apparatus, equipment, fittings or services and so cannot verify they are in working order. The buyer is advised to obtain verification from their solicitor or surveyor.

O'Riordan Bond Weston Favell Lettings
01604 814400

lettingswestonfavell@oriordanbond.co.uk

